

What is the Florida Engineering Foundation?

The Florida Engineering Foundation (FEF) was established in 1986 to encourage and assist students in pursuing engineering careers and to educate the public about engineering. Founded by engineers, our volunteer-based organization encourages involvement of individuals from education, business, industry, and government. The Foundation is authorized to receive and administer funds for charitable and educational purposes under Section 501(c) (3) of the IRS Code.

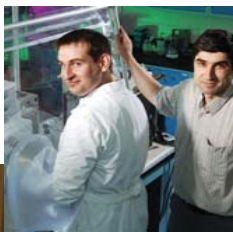
Our Goals

- To **assist students** enrolled in engineering and those interested in an engineering education
- To **provide resources** to programs promoting engineering in Florida
- To **encourage diversity** in the engineering profession
- To **raise public awareness** of the role of engineering in society

Our Programs

A partial list of programs that we fund include:

- Engineering scholarships
- Student competitions, including MATHCOUNTS
- State engineering fair awards
- Counseling programs
- Mentoring programs
- Minority programs
- Public education programs
- Support to colleges



Leverage Your Contributions

Your contributions provide the funds necessary to allow volunteers to work. The Foundation is run solely by volunteers. In addition, all Foundation programs are administered by volunteers in the organizations or by the educational institutions with which we work. Our aim is to ensure that the maximum percentage of donated funds directly benefits students.

Our Mission To promote and enhance engineering education in Florida in order to position our state as a technological leader in the global economy.

Planned Giving

Many individuals would like to make a lasting impact through charitable gifts to support organizations and institutions. This can be accomplished through an outright gift, a pledge, annuity, trust, or any number of other creative ways. Please consider the Florida Engineering Foundation in your long-term giving plans.

Any questions? Contact the Florida Engineering Foundation
email: shawn@FLEngineeringFoundation.org
telephone: 850-224-7121
fax: 850-222-4349

FLORIDA ENGINEERING

Foundation
Committed to engineering education.

Name

Address

Phone

Fax

E-mail

VISA/MasterCard Number

Signature

Exp. Date

Note: If you are employed by an organization with a matching gift program, please obtain the appropriate form from your employer and enclose it with your gift.

I/We support the Florida Engineering Foundation with a tax-deductible gift of \$ _____

Levels of Membership (Individual)

- Chairman's Circle** (annual donation: \$1,000 or more)
- Leadership Circle** (annual donation: \$500-\$999)
- Benefactor Circle** (annual donation: \$200-\$499)
- Century Club** (annual donation: \$100-\$199)
- General Member** (annual donation: \$25-\$99)

Levels of Membership (Corporate)

- Founder** (cumulative donation: \$ 25,000)
- Patron** (cumulative donation: \$ 10,000)
- Sponsor** (cumulative donation: \$ 5,000)
- Partner** (cumulative donation: \$ 1,000)

Please make tax-deductible check payable to:
Florida Engineering Foundation
PO Box 750, Tallahassee, FL 32302-0750
Donations may also be made on-line at
www.fleng.org/fsupport.htm
www.flengineeringfoundation.org

- Do not include me in a published list of donors

Thank you for your contribution.

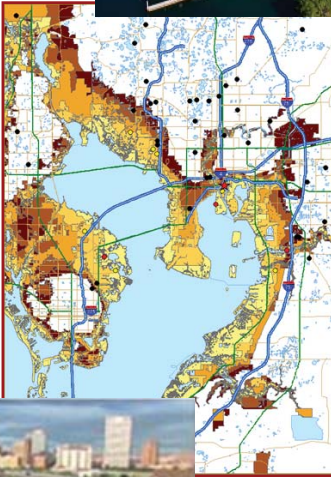
Email, Mail or Fax Today!

Benefits

- Your contribution is **tax-deductible**.
- You'll have the satisfaction of knowing that you are **doing your part to fund Florida's technological future**.
- Your name will be added to our **list of supporters**.
- You'll become a **voting member** of the Foundation.
- You'll receive a **plaque for a donation of \$1,000 or more**.



Donor's plaque



FLORIDA ENGINEERING

Foundation

Committed to engineering education.

Florida Engineering Foundation

PO Box 750

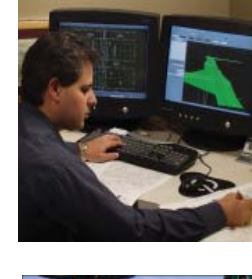
Tallahassee, FL 32302-0750

FLORIDA ENGINEERING

Foundation

Committed to engineering education.

Invest in Florida's Technological Future



Source: NASA

